

Phoenix-Talent School District 4

Code: **BBBA**
Adopted: 12/09/93
Readopted: 1/12/17

Board Member Qualifications

1. A Board member shall:
 - a. Be a qualified voter of the district;
 - b. Be a resident of the school district for a period of one year immediately prior to his/her election;
 - c. Take the oath of office before assuming the duties of the office;
 - d. Board members for Positions 1, 2, 6 and 7 must qualify by residing in Zone II as identified by the map appended to this policy and made a part of this policy by reference.
 - (1) Board members for Positions 3, 4, and 5 must qualify by residing in Zone I as identified by the map appended to this policy and made a part of this policy by reference.
 - (2) All board members must qualify by zone, but are elected at large. If there is any question, the County clerk will make the final determination as to which zone the candidate resides.
2. A Board member may not:

Be an employee of the school district.

END OF POLICY

Legal Reference(s):

[ORS 247.002](#)
[ORS 247.035](#)
[ORS 249.013](#)

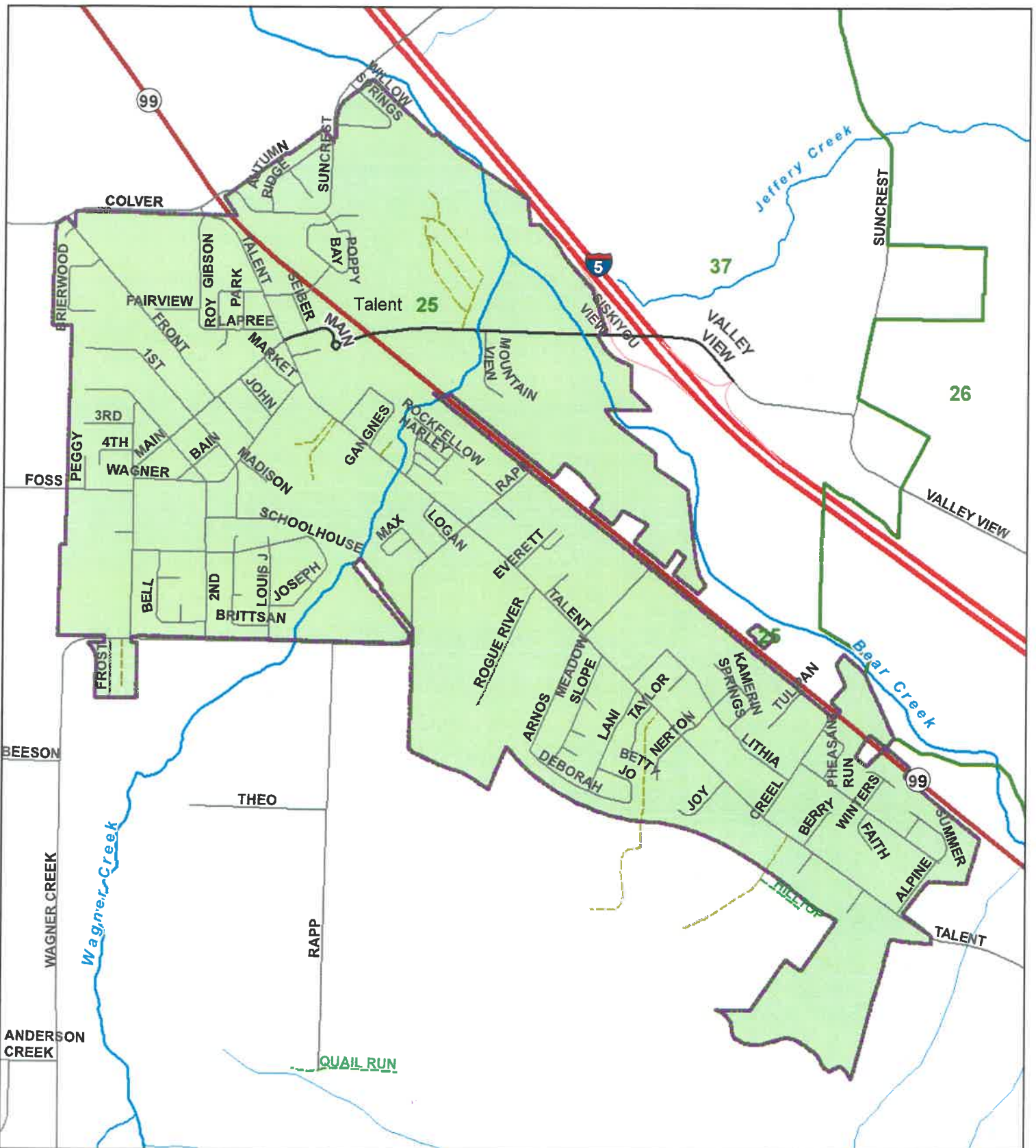
[ORS 332.016](#)
[ORS 332.018](#)
[ORS 332.030](#)

[ORS 332.124](#)
[ORS 332.126](#)

Oregon Constitution, Article II, Section 2.

Cross Reference(s):

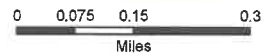
BBE - Vacancies on the Board



25 - Talent Precinct

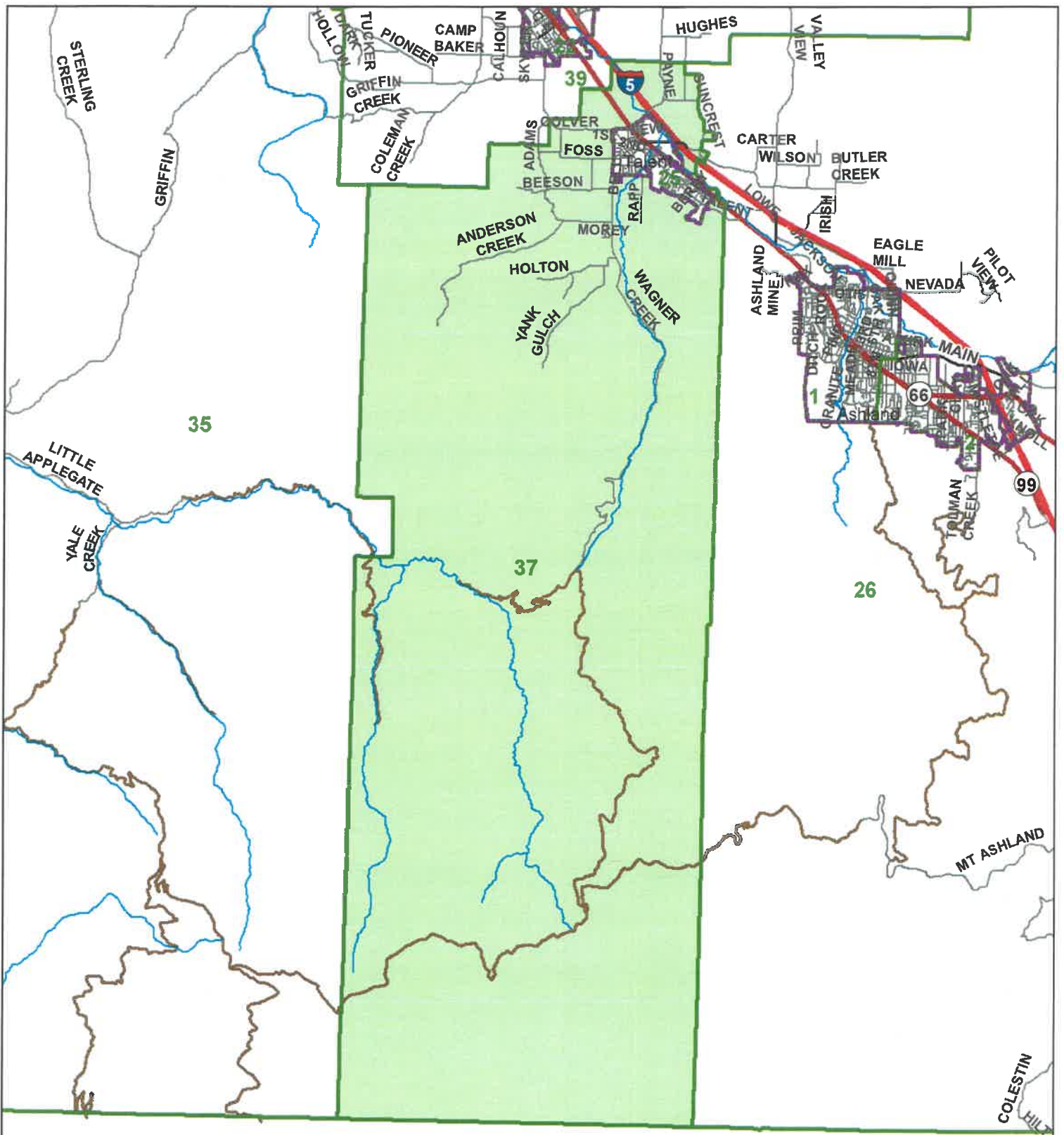
PTS Zone 1

- | | | | |
|-----------------------|------------------------|------------------|---------------|
| City Limits - Outline | Streets by Type | Arterial | Major Streams |
| Precinct Area | Freeway | Collector, Other | Named Streams |
| All Precinct Outline | On/Off Ramp | Local Access | Minor Streams |
| | State Highway | Private | |



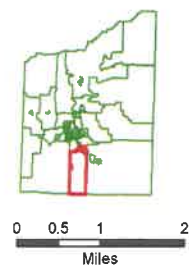
JACKSON COUNTY
GIS

This map is based on a digital database compiled by Jackson County from a variety of sources. Jackson County cannot accept responsibility for errors, omissions, or positional accuracy. There are no warranties, expressed or implied.



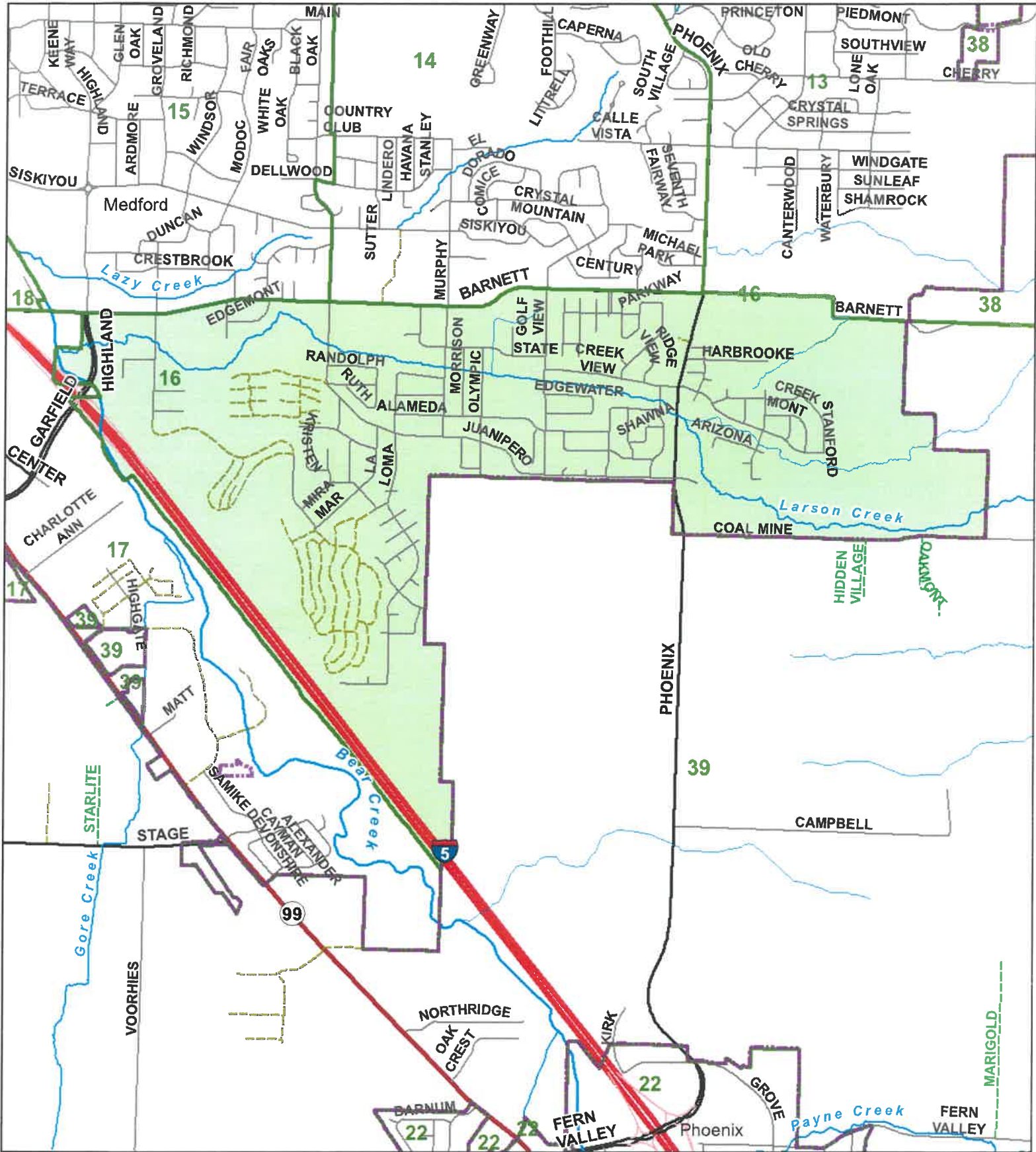
37 - Talent Rural Precinct PTS Zone 1

- | | | | |
|-----------------------|------------------------|------------------|--------------------------|
| City Limits - Outline | Streets by Type | State Highway | Rivers and Major Streams |
| Precinct Area | LOCALTYPE | Arterial | |
| All Precinct Outline | Freeway | Collector; Other | |
| | On/Off Ramp | Major BLM/USFS | |



JACKSON COUNTY
GIS

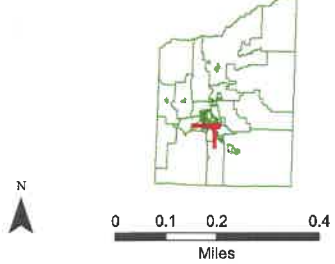
This map is based on a digital database compiled by Jackson County from a variety of sources. Jackson County cannot accept responsibility for errors, omissions, or positional accuracy. There are no warranties, expressed or implied.



16 - Medford Precinct

PTS Zone 2

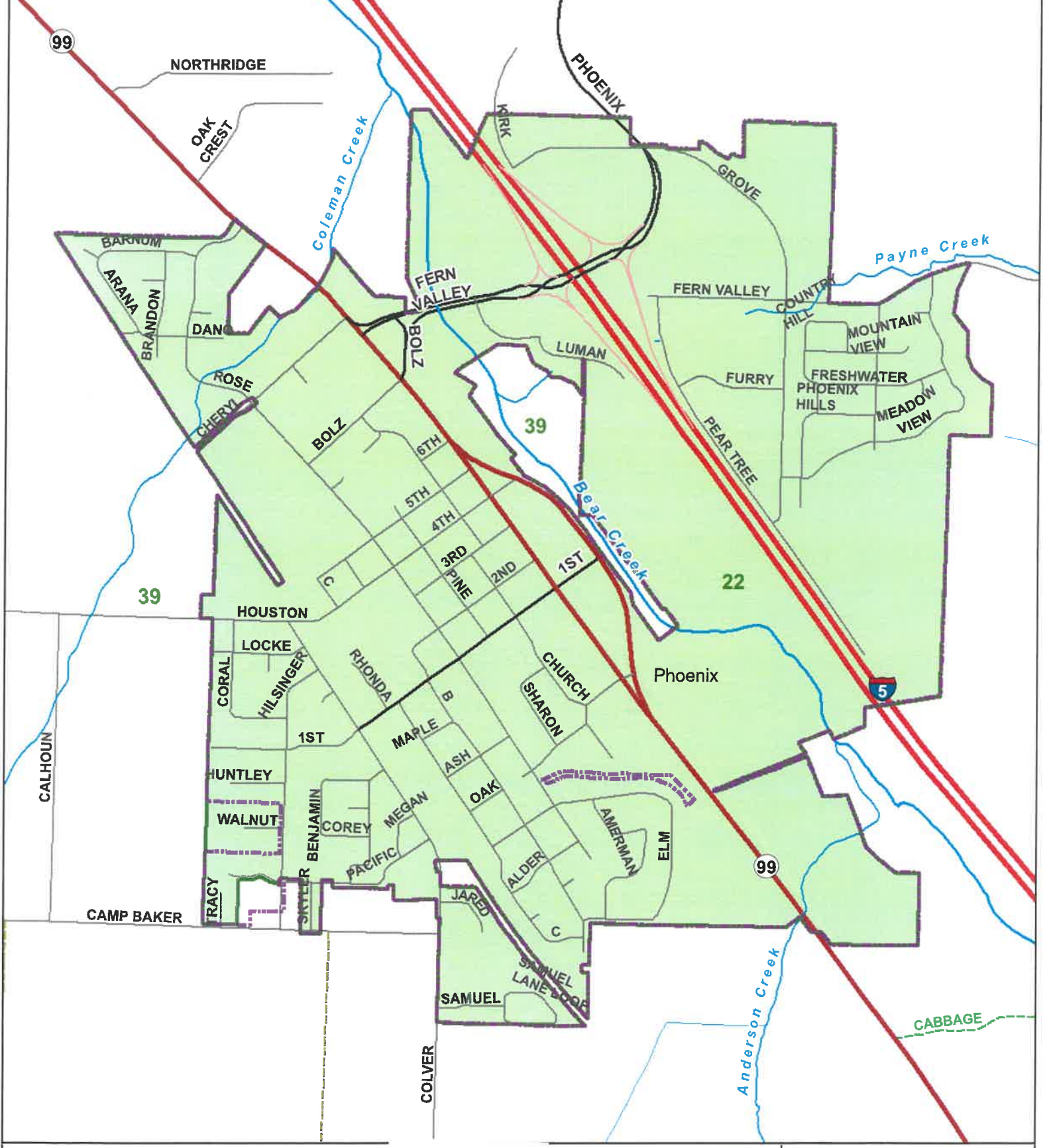
- | | | | |
|-----------------------|------------------------|------------------|---------------|
| City Limits - Outline | Streets by Type | Arterial | Major Streams |
| Precinct Area | Freeway | Collector; Other | Named Streams |
| All Precinct Outline | On/Off Ramp | Local Access | Minor Streams |
| | State Highway | Private | |



JACKSON COUNTY
GIS

This map is based on a digital database compiled by Jackson County from a variety of sources. Jackson County cannot accept responsibility for errors, omissions, or positional accuracy. There are no warranties, expressed or implied.

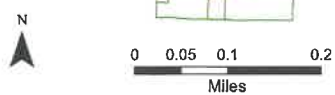
Date: 11/24/2017; DDPMap.mxd; smtibr



22 - Phoenix Precinct

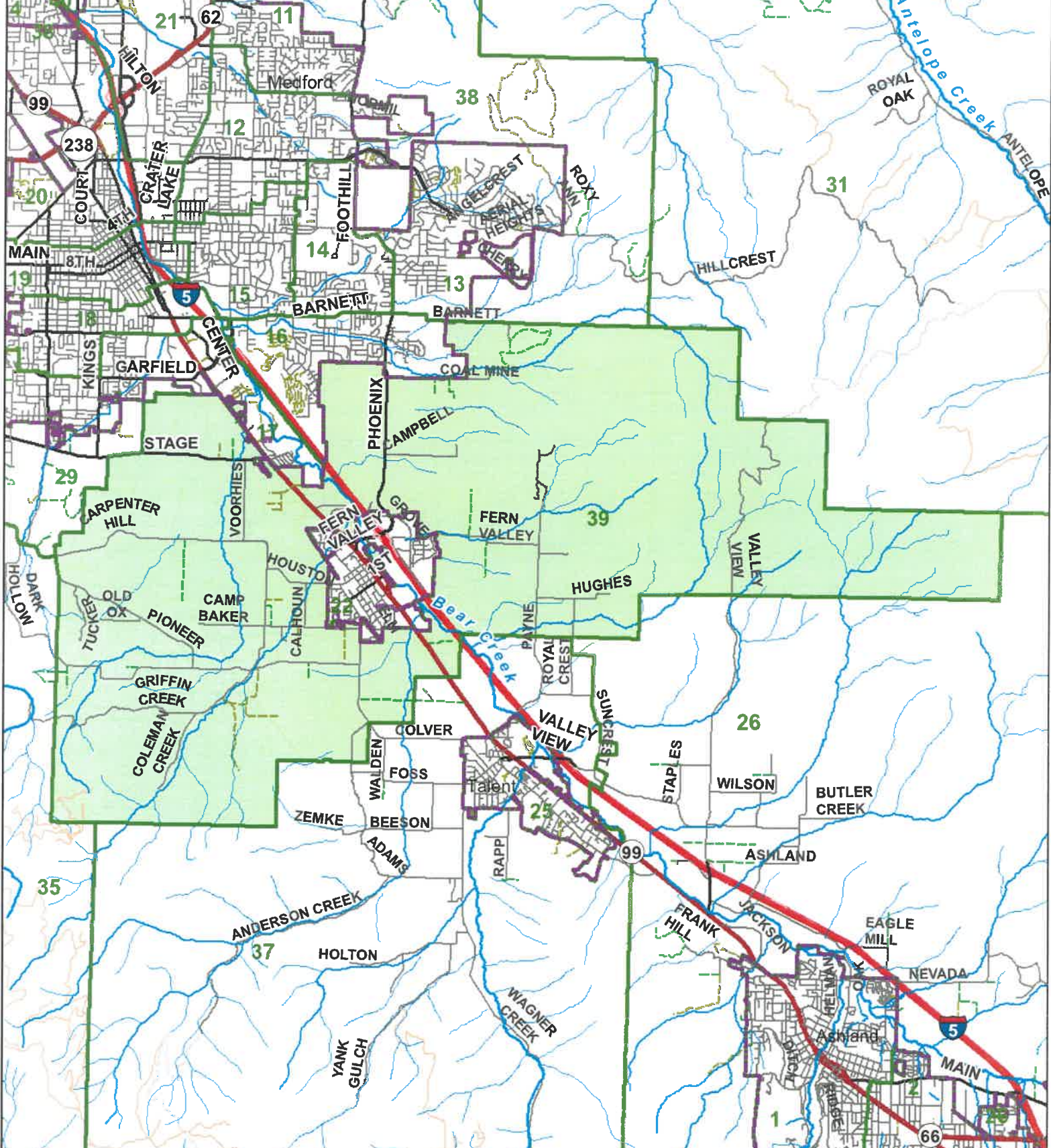
PTS Zone 2

- | | | | |
|-----------------------|------------------------|------------------|---------------|
| City Limits - Outline | Streets by Type | Arterial | Major Streams |
| Precinct Area | Freeway | Collector, Other | Named Streams |
| All Precinct Outline | On/Off Ramp | Local Access | Minor Streams |
| | State Highway | Private | |



JACKSON COUNTY
GIS

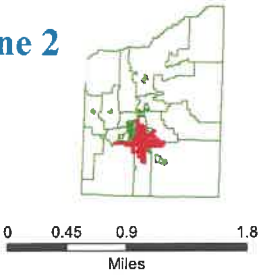
This map is based on a digital database compiled by Jackson County from a variety of sources. Jackson County cannot accept responsibility for errors, omissions, or positional accuracy. There are no warranties, expressed or implied.



39 - Phoenix Rural Precinct

PTS Zone 2

- | | | | |
|-----------------------|------------------------|------------------------|---------------|
| City Limits - Outline | Streets by Type | Collector; Other | Major Streams |
| Precinct Area | Freeway | Unimproved County Road | Named Streams |
| All Precinct Outline | On/Off Ramp | Local Access | Minor Streams |
| | State Highway | Other BLM/USFS | |
| | Arterial | Private | |



JACKSON COUNTY
GIS

This map is based on a digital database compiled by Jackson County from a variety of sources. Jackson County cannot accept responsibility for errors, omissions, or positional accuracy. There are no warranties, expressed or implied.